

# TinyLine SVG Evaluation for Java and Android

## Version 2.3

TinyLine SVG is a software development kit for Android and Java applications that want to use images in the SVG Tiny format for various purposes on Android and Java enabled devices.

### 1. Content

After downloading the `tinylinergreen23.zip` file, unzip it into some place on your hard disk. As a result you will have the following structure of the `tinylinetry23` directory:

<code>docs</code>	TinyLine SVG API specification
<code>tinylinetry</code>	TinyLine SVG files for J2ME CLDC/MIDP2.0
<code>tinylinetry_and</code>	TinyLine SVG files for Android
<code>tinylinetry_pp</code>	TinyLine SVG files for CDC/Personal Profile and J2SE
<code>tinylinerguide.pdf</code>	TinyLine SVG Programming Guide
<code>TINYLINE_DEVELOPER_LICENSE.TXT</code>	TinyLine License Agreement
<code>tinylinetry_readme.pdf</code>	This file you are currently reading

### 2. TinyLine SVG for CLDC/MIDP2.0

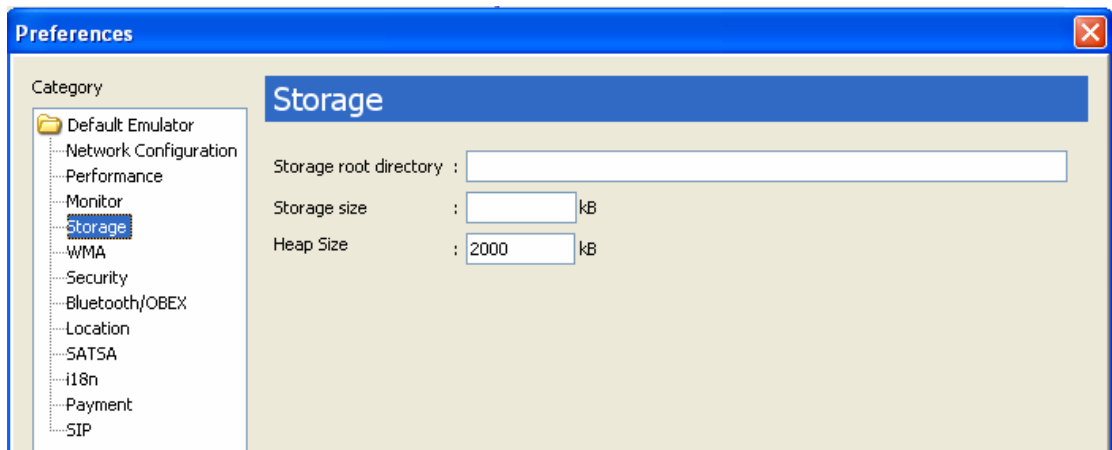
The `tinylinetry` subdirectory has the following content:

<code>bin</code>	This directory contains the TinyLine SVG CLDC/MIDP 2.0 files: <code>tinylinetry.jad</code> , <code>tinylinetry.jar</code> ,
<code>lib</code>	This directory contains core classes ( <code>tinylinetry.jar</code> ) of the TinyLine SVG for CLDC 1.0. DO NOT UNZIP THIS FILE! It must remain zipped for the compiler and interpreter to access the class files within it properly. This file contains all of the the compiled <code>.class</code> files for the TinyLine SVG.
<code>res</code>	This directory contains a examples image files
<code>src</code>	This directory contains sources of the TinyLine SVG MIDP 2.0 examples.

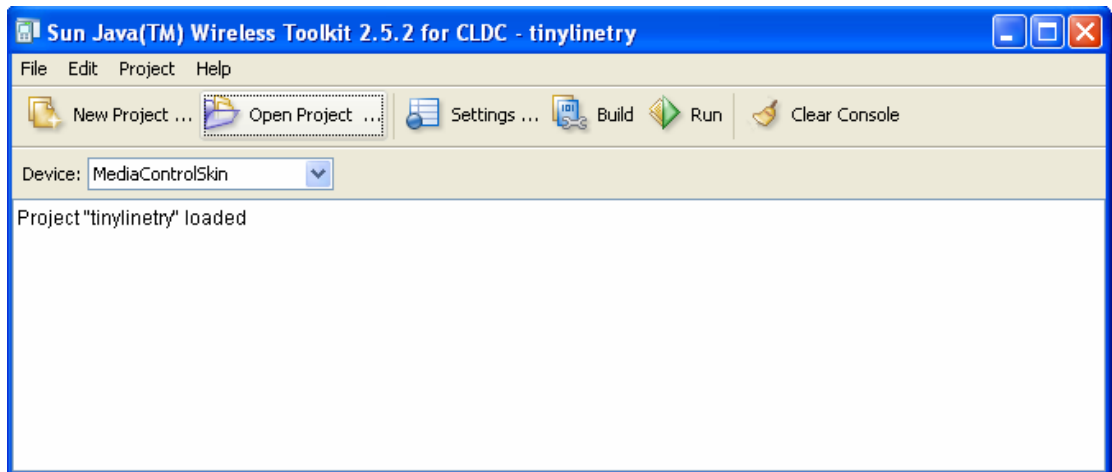
`tmplib` This directory contains PREVERIFIED core classes (`tinylines.jar`) of the TinyLine SVG for CLDC 1.0.

## Using the TinyLine SVG on WTK2.5.2 or later

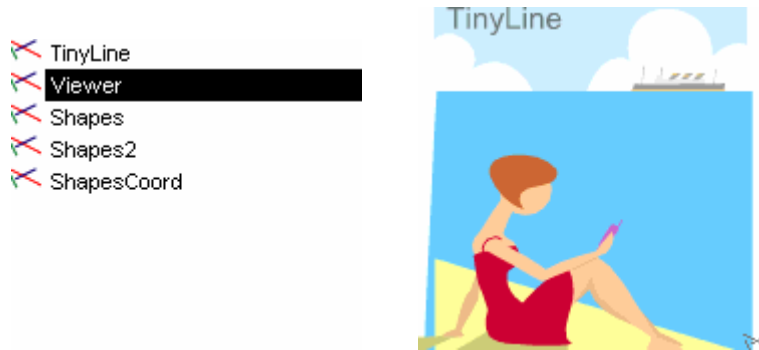
1. Copy the `tinylinetry` directory into the `C:\WTK2.5.2\app` directory or into your project directory.
2. Run the WTK2.5.2 KToolbar and set the heap size equal 2000K. By default it is very small and TinyLine SVG examples use the offscreen buffer (`TinyBuffer`).



3. Open the `tinylinetry` project and select the `MediaControlSkin`



4. Rebuild the project
5. Press the Run button and Select the example application (Viewer)



## Using the TinyLine SVG on other development tools (IDE)

You should add the path to the `tinylinetry/lib/tinyline.jar` to the class path of your IDE.

Some IDEs require that the class library (in our case `tinyline.jar`) should be PREVERIFIED. The preverified version is located at `tinylinetry/tmplib/tinyline.jar`

### 3. TinyLine SVG for Android

The `tinylinetry_and` subdirectory has the following content:

`bin` This directory contains the examples class files (`*.class`)

`lib/tinylinetry_and.jar`

This file contains core classes of the TinyLine SVG for Android.

DO NOT UNZIP THIS FILE! It must remain zipped for the compiler and interpreter to access the class files within it properly. This file contains all of the the compiled `.class` files for the TinyLine SVG.

`res` This directory contains resources (bitmaps, layouts, etc).

`src` This directory contains sources of the TinyLine SVG for Android examples (`*.java`).

`.classpath`

The Eclipse project classpath file

`.project`

The Eclipse project file

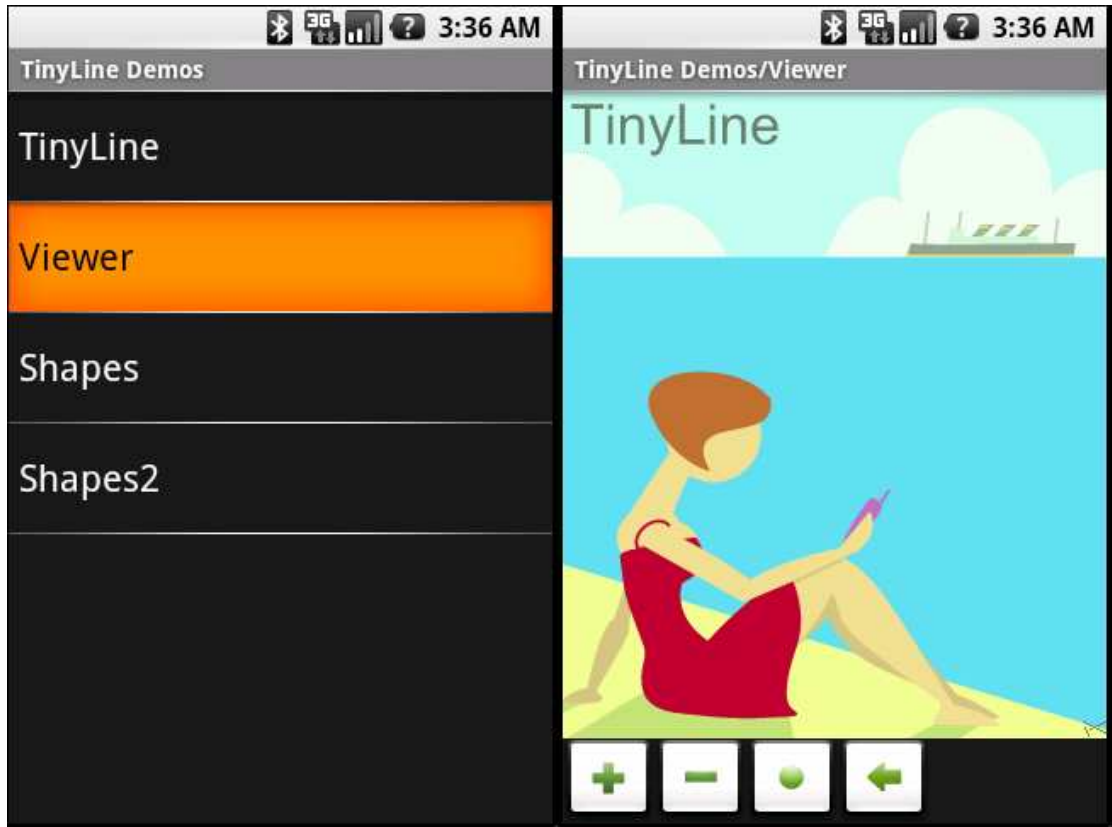
`AndroidManifest.xml`

The manifest for TinyLine SVG Eclipse project

## Using the TinyLine SVG on Eclipse with ADT

1. Copy the `tinylinetry_and` directory into your Eclipse projects directory. For example to `/user/workspace/tinylinetry_and`

2. Run Eclipse with ADT and rebuild /user/workspace/tinylinetry\_and project from scratch (Project/Clean).
3. Run tinylinetry\_and as Android Application.
4. Select the example application (Viewer)



#### **4. TinyLine SVG for CDC/Personal Profile and J2SE**

The `tinylinetry_pp` subdirectory has the following content:

`example` This directory contains the examples class files (`*.class`)

`src` This directory contains sources of the TinyLine SVG for CDC/Personal Profile and J2SE examples (`*.java`).

`lib/tinylinepp.jar`

This file contains core classes of the TinyLine SVG for CDC/Personal Profile and J2SE.

**DO NOT UNZIP THIS FILE!** It must remain zipped for the compiler and interpreter to access the class files within it properly. This file contains all of the the compiled `.class` files for the TinyLine SVG.

\*.html Open these files in a Java enabled browser. These files contain examples applets.

## Run TinyLine SVG examples in a Web Browser

You can run the examples in any Java enabled browser. Just open the index.html file in the browser and click on links following to examples. Alternatively, you can open in a browser any \*.html file to run a given example.

For example, you can open `tgirl.html` in your browser:



## **5. SVGT2Bin**

The SVGT2Bin compiles SVG T content into TinyLine 2D data stream

**Usage:** `java -cp tinylinetry_pp.jar tinyapp.SVGT2Bin [-v] -op font|path input ouput`

## **6. More Info**

For more information on the TinyLine SVG, please see <http://www.tinyline.com>